

# St. Mary Parish Economic Development News

Volume 2, Issue 2

April 2014



St. Mary  
Parish

Heart  
of the Cajun Coast

## Frank's Message

Metal Shark, LLC, an offshoot of Gravios Aluminum Boats, LLC, Jeanerette, LA; is moving to St. Mary Parish with a \$10 million expansion of its manufacturing operations to accommodate current and future orders for large vessels under its "Defiant" and "Endurance" class surveillance craft, sold to military and law enforcement clients located world-wide. The new 60,000 sq. ft. manufacturing space is located on a 25-acre waterfront site adjacent to the east side of the Charenton Drainage and Navigation Canal. The company will eventually employ 100 workers at the new site. The company required a site near Hwy. 90 with access to the Gulf and this site fit both criteria. The new shipyard will have the capacity to accommodate the construction of boats up to 250' but will immediately produce vessels in the 45'-75' currently under order. Boats 40' and smaller will continue to be build at their facility in Jeanerette.

PMI Energy Services, a division of Superior Energy Services, a Dutch company, is constructing a \$3 million shore based operation site on Youngs Road in Morgan City. Located on 22 acres, a new 16,000 sq. ft. office building, dock, and secure lay-down yard will enable the company to store and move equipment and personnel to and from Morgan City and its work sites. The facility will accommodate crew changes up to 200 workers per week and offer space to house logistics coordinators and to conduct safety training. With facilities at Port Fourchon in Lafourche Parish over-crowded, the company predicts this will be the new mid-Gulf logistics hub.

The Charenton Canal Business Coalition continues to meet in an effort to re-open the "Jaws", a silted area at it's intersection with the GIWW and GOM. The "Jaws" impedes safe access directly to the Gulf of Mexico. The Port of West St. Mary will deploy navigational buoys to mark the previously operational navigation channel. 10 businesses and property owners are spearheading the initiative.

In other news, Parish President Paul Naquin announced that Frank Fink, Director of Economic Development was elected as Vice-President of the Louisiana Industrial Development Executives Association. Frank also serves on the organization's Legislative Committee.

## Parish Economic Development Briefs

Parish employment was up in February after a January dip and stood at 21,369. February's unemployment rate was 4.7%, the lowest rate since the Spring of 2008. The State unemployment rate in February was 4.2%, down two (2) points from a year ago; the nation's unemployment rate in February was 7.0%.

A recent study by LSU's Division of Economic Development indicates 23,424 construction jobs will need to be filled by 2016 based on the number and size of announced projects. This demand, and low unemployment rates across the Gulf Coast will add pressure for companies looking for labor. In addition, the Manufacturers Alliance for Productivity and Innovation (MAPI) predicts U.S. housing starts will increase by 30% by 2015 and manufacturing growth for key sectors in South Louisiana are expected to increase as follows by 2015: fabricated metal products, 4%; mining and oil and gas field machinery, 5%; industrial machinery, 4%; and basic chemicals, 3%.

The number of businesses visited by parish staff this past quarter was 19. The number of projects in the pipeline totaled 23 with the potential to create more than a 1,200 jobs and investments of \$200 million.

## Booth space available for LEDA job fair

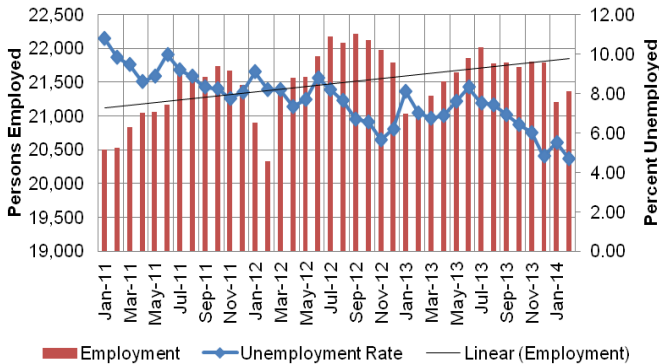
Lafayette, LA— Booth space for the 2014 LEDA Job Fair is now available. The LEDA Job Fair takes place on Wednesday, May 21, from 9 a.m. to 3 p.m., at the Cajundome Convention Center in Lafayette. Over 1,600 job seekers from throughout the region attended the event in 2013, and organizers expect large crowds again this year. "The LEDA Job Fair is an excellent opportunity for Louisiana employers from all industry sectors to meet and evaluate thousands of prospective employees in a single day", says Ryan LaGrange, LEDA's Director of Workforce Development.

For more information about available booth space contact Ryan LaGrange at (337) 593-1405 or [RyanL@lafayette.org](mailto:RyanL@lafayette.org). For general information and the latest Job Fair developments, visit LEDA's website, [www.lafayette.org/jobfair](http://www.lafayette.org/jobfair).

# Economic Facts and Figures

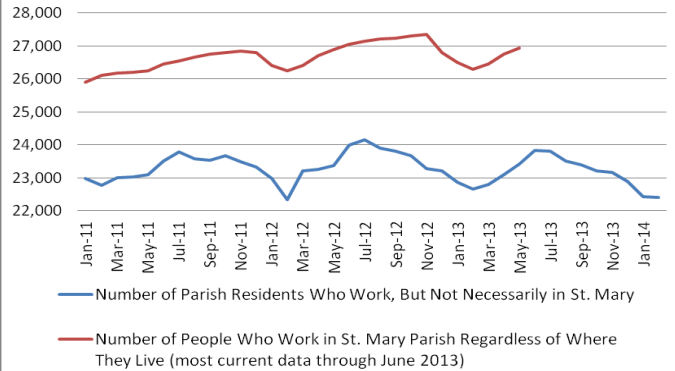
## Resident Employment/Unemployment

January 2011 to February 2014  
Louisiana Workforce Commission



## Parish Labor Force v.s. Parish Workforce

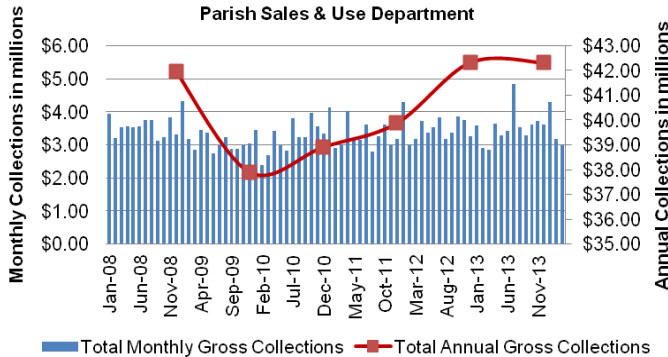
January 2011 to February 2014



## Parish Gross Tax Collections

2008 to March 2014

Parish Sales & Use Department



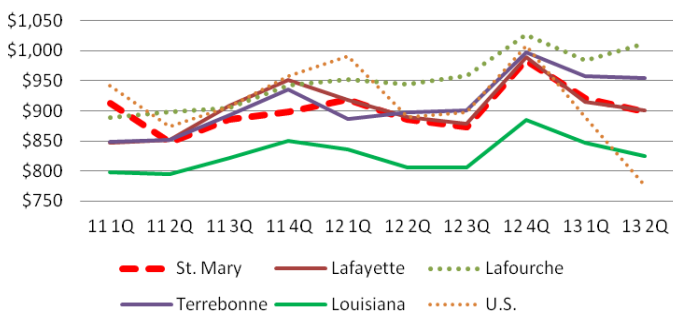
## Top Statewide Construction Occupation Employment Projections

SOC Code	SOC Title	2011	2016	New Jobs	Replacement	Total Openings
		Employment	Employment			
47-2061	Construction Laborers	10,714	14,971	4,257	344	4,601
47-2152	Plumbers, Pipefitters, and Steamfitters	5,394	7,467	2,073	759	2,832
47-2111	Electricians	5,805	7,862	2,057	750	2,807
47-2073	Operating Engineers and Other Construction Equipment Operators	5,256	7,388	2,132	556	2,688
47-1011	Workers	4,751	6,541	1,790	538	2,328
47-2031	Carpenters	4,731	6,483	1,752	474	2,226
51-4121	Welders, Cutters, Solderers, and Brazers	2,847	4,129	1,282	374	1,656
47-2141	Painters, Construction and Maintenance Heating, Air Conditioning, and Refrigeration Mechanics and Installers	2,731	3,973	1,242	214	1,456
53-7062	Laborers and Freight, Stock, and Material Movers, Hand	2,462	3,392	930	401	1,331

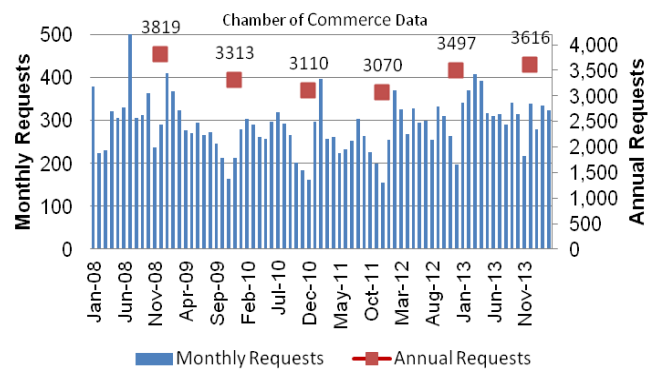
Source: LSU Division of Economic Development and the Louisiana Workforce Commission. Based on projects to be constructed and employment in NAICS 237 Heavy and Civil Engineering, and NAICS 238 Specialty Trade Contractors. Projects included in employment projections include: BioNitrogen; CF Industries; Cheniere; G2X; Leucadia; Magnolia; Methanex; Nucor Sasol; Shell Trunkline; University Medical Center; and Veterans Hospital.

## Average Weekly Wages

First Quarter 2011 to Second Quarter 2013



## Requests for Rental Housing Listings 2008-2014



**Got a comment, send us an email or call:**

Frank G. Fink, Director  
337-828-4100, Ext: 340  
[ffink@stmaryparishla.gov](mailto:ffink@stmaryparishla.gov)

Ramona Landry, Administrative Manager  
337-828-4100, Ext: 342  
[rlandry@stmaryparishla.gov](mailto:rlandry@stmaryparishla.gov)

To sign up and receive a digital copy of this newsletter in the future, send an email to the Office of Economic Development at:  
[rlandry@stmaryparishla.gov](mailto:rlandry@stmaryparishla.gov).

## Available Buildings and Sites at:

<http://www.louisianasiteselection.com/bayouregion/Buildings-And-Sites.aspx>